



The Height of Luxury

From the views, to the suites, the hospitality and service, and the acclaimed restaurants and bars, Tower Club is everything you've heard about lebuA – turned up, for a heightened five-star hotel experience.

Here on the 51st through 59th floors, the views from our 221 expansive suites are even more extraordinary, the separate bedrooms, living room and kitchenette complemented by the myriad thoughtful touches that reflect the personalized, intuitive service that pervades every floor – like customized check-in and check-out, because here every moment counts.

The non-alcoholic minibar, Nespresso coffee machine, Handy phone offering free international calls to selected countries and premium bathroom amenities, are all complimentary. Access to the intimate and sophisticated Tower Club Lounge with continental breakfast, light luncheons, afternoon high tea, and canapés and, alcoholic and non-alcoholic beverages can be availed at an additional charge.

Location:

- On the corner of Charoen Krung and Silom Roads, a short stroll from the Chao Phraya River
- 40-minute drive to Suvarnabhumi International Airport
- 15-minute drive to the MRT (3 kms)
- 10-minute walk to the BTS Sky Train Saphan Taksin station
- 10-minute walk to convenient shuttle ferries
- Easy access via expressways that connect north and south Thailand

Room Features

- Daily newspaper
- Exclusive bath amenities
- Hair dryer
- High-speed wired & wireless Internet
- Interactive TV & DVD player
- Iron & ironing board*
- Mini-bar
- Nespresso coffee machine
- Personal safe
- Handy phone
- Pillow selection*
- Telephone with voicemail
- Washer & dryer*

*In two and three-bedroom suites

Additional Services

- Babysitting (24 hours' notice)
- Concierge
- Daily turndown service
- Doctor on call (24 hours)
- In-suite dining (24 hours)
- In-suite dining from The Dome at lebuA
- Laundry & dry cleaning
- Limousine service
- Shoeshine service on request
- Shuttle bus to BTS Sky Train from 7am to 5pm
- Valet parking

Accommodation

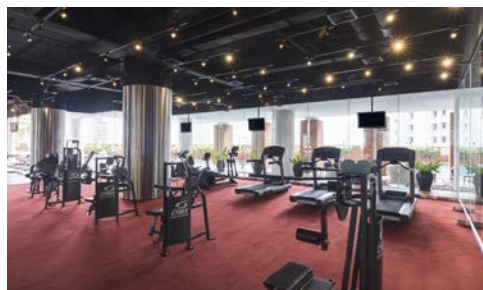
Suite Categories	Area (m ²)
Tower Club City View Suite (One Bedroom)	66
Tower Club River View Suite (One Bedroom)	66
Tower Club Signature Suite (Two Bedroom)	176-186
Tower Club Luxury Suite (Two Bedroom)	176-186
Tower Club lebuA Suite (Three Bedroom)	266
Tower Club Hangover Suite (Three Bedroom)	266



Facilities

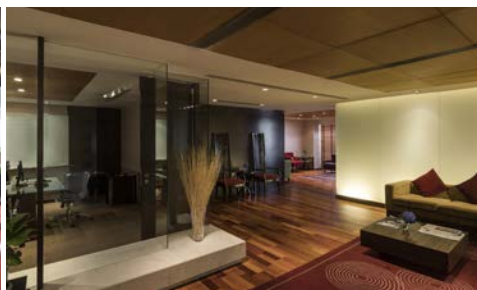
Fitness Center & Swimming Pool (M Floor)

Overlooking an open-air pool, lebuA's fitness center offers a range of modern exercise fitness equipment, elegant sauna, steam room and spa treatment rooms.



Business Center (51st Floor)

State-of-the-art business center provides total solutions and support for the executive, from internet connection, message, mail and postal services, to personalized secretarial and administrative assistance and conference rooms.



Café Mozu (M Floor)

Live from poolside, Café Mozu serves authentic yet contemporary Indian, Western, Italian and Thai cuisine prepared by chefs from each region.



Conferences & Functions

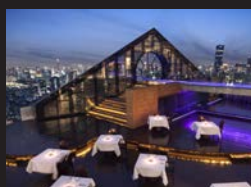


Tower Club at lebu a's accessibility in the center of the city, wide choice of function rooms and bathrooms that can accommodate up to 700 guests, and exceptional catering from the award-winning restaurants at The Dome, have made it downtown Bangkok's venue of choice for every occasion, from wedding and social galas, to product launches and staff parties, fashion shows and press conferences.

The legendary city and river views, lavish handpicked flower arrangements, winding staircases and hanging chandeliers make a timeless and elegant statement, and every occasion unforgettable.

LEVEL	FUNCTION ROOMS	DIMENSIONS	AREA (SQ.M)	HEIGHT (SQ.M)	THEATRE	CLASSROOM	U-SHAPE	COCKTAIL	BUFFET	BANQUET
1	Malika (M Floor)	9m x 13.5m	120	4	50	30	25	50	30-40	50
	Kamala	9m x 9m	80	4	30	24	15	30	30	30
	Nalini	9m x 9m	80	4	30	24	15	30	30	40
	Pushkara Ballroom	27m x 13.5m	525	4	200	100	70	300	150	150
2	Aravinda (M Floor)	22.5m x 13.5m	390	4	200	100	70	300	150	120
	Padmini	9m x 9m	80	4	30	24	15	30	10	30
	Padmana	4.5m x 7m	30	4	20	-	-	-	-	10
	Padmavati	13.5m x 9m	120	4	40	24	24	50-70	50	50
	Padma Ballroom	31.5m x 13.5m	245	4	150	70	60	300	150	150

The World's First and Only Vertical Destination at the Iconic lebu a



52nd Floor BREEZE

A stunning alfresco restaurant with a wide selection of authentic Asian delicacies, spectacular river views and an adjacent bar for business or pleasure.

Open: Daily 06:00pm – 12:00am



LEBUA NO.3

The world's tallest and Bangkok's newest upscale Gin, Caviar & Vodka Bar. The high-tech venue offers dance-stopping views of the city skyline and the Chao Phraya River.

Open: Daily 05:00pm – 01:00am



61st Floor CHEF'S TABLE

The art of cooking is placed at the very heart of the elegant and sumptuous dining experience. Guests float in the night sky with your own window on Bangkok... even in a sky of stars however, Chef's cuisine is still the star of the show.

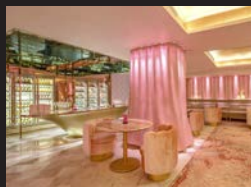
Open: Tuesday to Sunday 06:00pm – 01:00am



64th Floor FLÛTE A PERRIER-JOUËT BAR

The world's best al fresco Champagne bar, and that is what our connoisseurs say. With the Champagnes, exclusive epicurean delights and classic jazz tunes, this is the perfect place to start your evening.

Open: Daily 05:00pm – 01:00am



PINK BAR

Intimate and feminine, romance and love mingle with the creative cocktails and bubbles. Featuring only the very best champagnes, bathed in pink the double height champagne cellar glistens invitingly and Bangkok glows seductively below.

Open: Daily 05:00pm - 01:00am



DISTIL

Culinary mixology takes a slightly different form at Distil with tantalizing new flavors, textures and visuals that enhance every cocktail, making the experience unforgettable.

Open: Daily 05:00pm – 01:00am



63rd Floor SIROCCO

The sense of 'having arrived' at Bangkok's most iconic restaurant begins with the ascent to the top of lebu a and the walk down the artistically lit staircase, towards the poetic fountain.

Open: Daily 06:00pm – 01:00am



ALFRESCO 64 - A CHIVAS BAR

Jutting majestically into the air is Alfresco 64, A Chivas Bar, touted as the highest outdoor whisky bar in the world.

Open: Daily 05:00pm – 01:00am



SKY BAR

Suspended on a precipice 820 feet above Bangkok, Sky Bar is the world's highest bar of its kind. It's also the home of the famous Hangoverini, which was created for the cast of The Hangover Part II while they were filming at lebu a.

Open: Daily 04:00pm – 01:00am



65th Floor MEZZALUNA

This Michelin two star restaurant, is the piece de resistance of lebu a's food and beverage outlets, with a stunning 180-degree city and river views, rivaled only by the masterful culinary presentations placed before you.

Open: Tuesday to Sunday 06:00pm – 01:00am

lebu a Hotels and Resorts

lebu a Hotels and Resorts is an international luxury brand that operates distinct hotels, fine restaurants, and stunning bars. The company's lodging collection features Bangkok's best-performing luxury hotels (Tower Club at lebu a and lebu a at State Tower), magnificent properties in India (lebu a Lucknow and lebu a Corbett), and an exclusive property in New Zealand (Lake Okareka Lodge by lebu a).